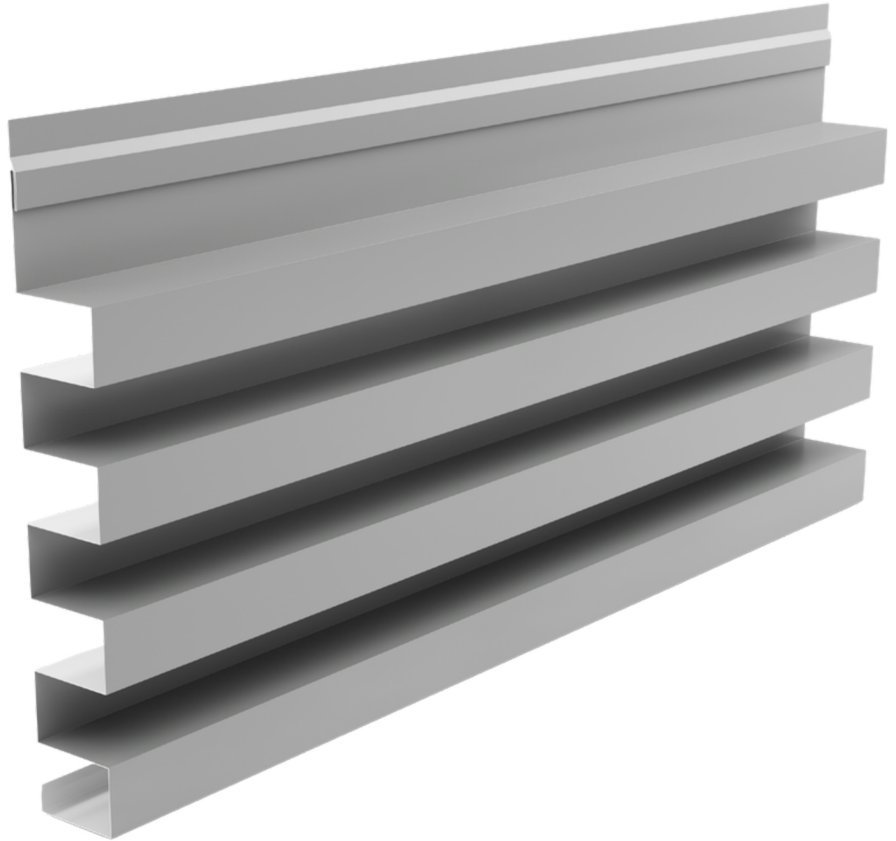
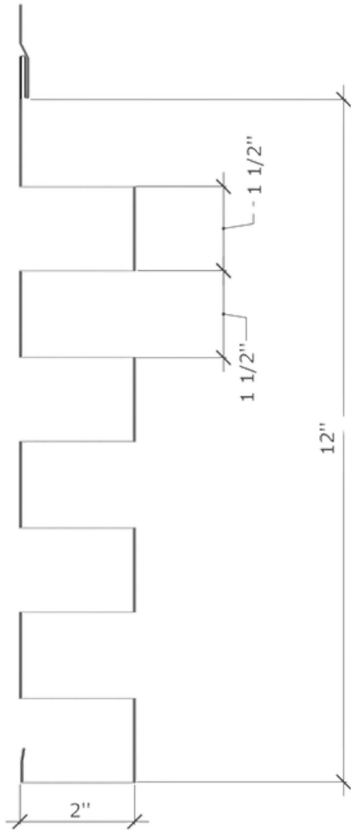


## MAJESTIC SERIES

# MZ 14 Panel



## PRODUCT OVERVIEW

### MATERIALS

- 24 gauge steel
- 22 gauge steel
- .032 aluminum
- .040 aluminum
- .8mm zinc
- 1mm zinc

### SPECIFICATIONS

- 12" coverage x 2" depth

### DESIGN CONSIDERATIONS

- 25' length max
- 12" length minimum

### COLORS

- *Colors of Innovation*
- Barrel Collection
- Custom Colors

### TESTING

- ASTM E1592
- ASTM E330

### PRODUCT FEATURES

- Fully tested to meet all design criteria
- Vertical or horizontal installations
- Micro-seam corners
- Vertical mullion designs
- Concealed fastener
- Value-drive system

*Oil canning is not a cause for rejection*

